



CPC31220 CERTIFICATE III WALL AND CEILING LINING

Gain the skills to become a recognised tradesperson within the Building & Construction Industry!

ABOUT US!

Fresh Start Education deliver relevant industry training, focusing on best practice of delivery in an environment that supports up skilling and continual improvement for all of our students.

Fresh Start Education's Trainers & Assessors are industry experts with years of experience in roles such as; Construction Managers, Project Managers, Builders and Contractors. Our Trainers & Assessors will deliver all aspects of residential and commercial applications of wall and ceiling lining applications, enabling you to become a qualified Dry Wall Plaster in the building and construction industry.

Fresh Start Education deliver flexible training and assessment services that support your needs

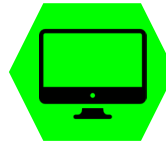
WHY CHOOSE FRESH START?

- ✓ **You're not just a student number**, you will receive as much one-on-one support as you need!
- ✓ Fresh Start Education provides the **highest quality** course content with flexible programs suited to your needs
- ✓ Our Industry Experts take the time to understand you, your goals, individual needs and current level of experience.
- ✓ **Payment Options**
No matter what your circumstances, Fresh Start Education has a payment option to suit:
 - ✓ Payment Plan
 - ✓ Credit Card
 - ✓ Direct Transfer
- ✓ **Not local?? No worries!**
We deliver our courses Australia wide!



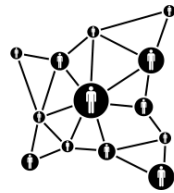
1:1 SUPPORT

Request coaching calls at any time!



FLEXIBLE LEARNING

Face to Face, Online and Distance Education, Fresh Start Education has you covered!



MENTORING & NETWORKING OPPORTUNITIES

Get the edge in the workplace by attending our Industry Nights!



PRE-QUALIFICATION INTERVIEW

To ensure we're leading you on the right path to success!



NATIONALLY RECOGNISED COURSE



NO SET INTAKE PERIOD!

Which means you can ENROL TODAY!!



THE COURSE

COURSE COST:

RPL Assessment = \$3,990

Training and Assessment Services = \$400 per unit of competency

DURATION: Maximum 36 Months

ENTRY REQUIREMENTS: Nil

Successful completion of this qualification provides a trade outcome in wall and ceiling lining for residential and commercial construction work.

Whilst this qualification is the minimum requirement for obtaining a Trade Contractors Licence, it is imperative that you speak with our Industry Experts or check with the relevant authority **before** enrolling as the completion of this qualification does not guarantee a licenced outcome.

ALREADY INDUSTRY EXPERIENCED?

We acknowledge the skills you've gained through work and life experiences by offering Recognition of Prior Learning (RPL), reducing the time it takes to complete your qualification.



LET'S GET YOU QUALIFIED!

Your Trainer & Assessor will conduct a Pre-Qualification Interview and onsite RPL Assessment; gathering your work history, industry experience and future goals. If any gaps in knowledge and/or skills are identified, further training and assessment will be provided.

**CONTACT US TODAY ON
1300 980 999!!**

TRAINING & ASSESSMENT METHODS

Skills and knowledge assessments are an essential step in progressing through your course. You may be assessed in several ways while you are studying with Fresh Start Education, including:

- ✓ Observation
- ✓ Workplace Delivery
- ✓ Online Learning at your own pace
- ✓ Mixed-Mode Delivery
- ✓ Workshop and Classroom
- ✓ Work Samples/Evidence
- ✓ Third-Party Supervisor Verification



COURSE STRUCTURE

Fresh Start Education deliver relevant industry training and assessment that provides you with the skills, knowledge and experience to achieve this Nationally Approved and Accredited Building & Construction qualification.

Our course content has been purposefully developed to be future-focused, complete with current industry topics that are practical and relevant to your trade. To achieve this qualification, you must demonstrate competency in 29 units of competency; comprised of 22 core units and 7 elective units.

During your RPL Assessment with your allocated Trainer & Assessor, you will have the opportunity to discuss such electives and determine the best choices for your desired pathway and goals.

To make sure this is the right qualification for you, please review the units of competency listed below to ensure that your scope of works meets the requirements of the qualification.

To view our full list of CPC31220 units and electives, please visit our website; www.freshstart.edu.au Or contact us via email at enrolments@freshstart.edu.au



BUILDING YOUR FUTURE WITH YOU!!